

EQUIPMENT	TYPES	MANUFACTURE	SUPPLIER
Radar (2 off)	ARFA S 343 CA 342/6	RACAL	RACAL
Doppler transponder	DEBEG 5900	DEBEG	STN
Doppler log	JLV 203	JRC	ESSING
GPS satellite navig. system	NAUTOSTAR	ANSCHUTZ	ANSCHUTZ
Navigation echo sounder	LAZ 50 AW	ELAC	ELAC
Navigation receiver	PVM 900	STANDARD RADIO	STN
Weather facsimile receiver	JAX-9	JRC	ESSING
Radio direction finder	GPE 277	PLATH	STN
Cyro compass system	Std 14	ANSCHUTZ	ANSCHUTZ
Conventional auto pilot	NAUTOPLOT D	ANSCHUTZ	ANSCHUTZ
Rudder steering	-	-	-
Magnetic compass system	REFLECTA 2	ANSCHUTZ	ANSCHUTZ
Rudder angle indicator system	-	ANSCHUTZ	ANSCHUTZ
Sound signalling system	WT 150/130	KOCKUM SONES	KOCKUM SONES
Maneuver signalling searchlight	MVL 35/24	WISKA	WISKA
Windward wiper system	M 255	W. G. SCHULZ	W. G. SCHULZ

EQUIPMENT	TYPES	MANUFACTURE	SUPPLIER
EPHIF 408 Mhz	DEBEG 3540 (KANNAD 408M)	DEBEG	STN
2 VHF radiotelephone with DSC	DEBEG 6330	DEBEG	STN
1 VHF radiotelephone	DEBEG 6348	DEBEG	STN
SATCOM Std with phone, FAX, TLX	DEBEG 3240	DEBEG	STN
SATCOM Std with ECG	DEBEG 3220	DEBEG	STN
3 VHF handheld radiotele.	DEBEG 6700	DEBEG	STN
Radio station ACC G.M.D.S.S.	DEBEG 3100	DEBEG	STN

DESTINATION Carriage of 20' or 40' containers in holds, on hatch covers on deck. Height of holds adequate for 4 tiers of 8' containers and one tier of 9'6", except Hatch No 2 which accepts 6 tiers of 8' containers. Hatch No 1 is prepared for carriage of dangerous goods of 1/2/3/4/1/4/2/4/3/5/1/5/2/6/1/5/2/7/8 Classes as per SOLAS, Chapter VII. Holds No 2-4 are prepared for carriage of dangerous goods of 2/3/4/1/4/2/4/3/5/1/5/2/6/1/5/2/7/8 Classes as per SOLAS, Chapter VII. 40' containers in holds are cell-guided.

SPEED & FUEL CONSUMPTION Service speed (at 9.0 m draught) 18.9 kn. Service speed (at ballast draught) 19.7 kn. Fuel consumption (at 9.0 m draught) 46.5 m³/24 hrs. Fuel consumption (at ballast draught) 48.5 m³/24 hrs. DD. Cruising range 11000 n.m.

MAN PROPELLSION One two-stroke crosshead engine SULZER Licence H-CEDERLIG type 6TACR2, rating 12100 kW at 100 rpm. The engine drives one fixed pitch propeller, diameter 5.90 m, right hand rotation made by ABB ZAMECH Ltd.

ELECTRICAL POWER PLANT One three-phase alternator, type 008-130W, 675 kVA at 900 rpm, 450 V, 60 Hz made by DOLMEL. Two three-phase alternators, type GDB-130W, 890 kVA at 900 rpm, 450 V, 60 Hz made by DOLMEL. One four-stroke engine, SULZER Licence H-CEDERLIG, type BAL20/RO, rating 570 kW at 900 rpm. Two four-stroke engines, SULZER Licence H-CEDERLIG, type BAL20/RO, rating 760 kW at 900 rpm. One shaft generator, STN type SSF1120L2-16S, 1250 kVA at 450 V, 60 Hz. One emergency four-stroke engine, DEAMP/MAN, type 0.2565 E/UM 274 F, 138 kVA at 1800 rpm, 440 V, 60 Hz.

STEERING GEAR One electrohydraulic steering gear, HYDROSTER, type MS 500, rating 500 kW.

BOW THRUSTER Manufactured by ABB ZAMECH Ltd, Uscon 90 kN type T60, rating 90 kW at 337 rpm, thrust 13 kN.

BOILERS Manufactured by AALBORG A/S, for HFO tank heating (preheaters and oil heat consumers required). One auxiliary water tube boiler, vertical, 2.0 t/h, 0.7 MPa. One WH smoke tube boiler, 2.0 t/h, 0.7 MPa.

EVAPORATOR Manufactured by FUCO Ruma, capacity 20 t/24h.

BALLAST SYSTEM One centrifugal, self priming type pump of 350 m³/h capacity, 0.2 MPa. Additionally one spare SW cooling pump of 420 m³/h capacity can be connected to the ballast system.

HATCH COVERS Nine hatches fitted on the main deck, opening size: No.1 Hatch - 12.48 x 13.00 m. No.2-9 Hatch - 12.48 x 20.60 m.

HATCH COVERS WEIGHTS No.1 Hatch - PS or SB - 18.5 t. No.3-9 Hatch - PS or SB - 22.5 t, centre - 16.0 t. No.2 Hatch - PS or SB - 20.5 t, centre - 15.0 t.

CONTAINERS STACKING LOADS Hatch covers - on No.1-2 Hatch - 40 t/TEU, 60 t/VEU. No.3-9 Hatch - 60 t/TEU, 90 t/VEU. Main deck (frame 42 + 82) - 60 t/TEU, 90 t/VEU. Holds - 140 t/TEU, 175 t/VEU.

UNIFORM LOAD Hatch covers - 1.75 t/m². Main deck (frame 42 + 82) - 1.50 t/m². Tanktop - 0.30 t/m².

REEFER PLUGS 120 sockets for reefer containers 3x440 V, 60Hz, 13.5kW. - 28 pieces on hatch coamings. - 24 pieces on superstructure front wall, made by WISKA, type 32/R-36 (3 o'clock) - 60 PCS, 32/L-36 (3 o'clock) - 60 PCS.

CRANES Three deck cranes KRUPP of RL 45T-28M type, radius from 4.0 m to 28.0 m, lifting capacity 45 t. One life boat crane and automatic mooring type F8010/2516, radius from 18.2/2 m to 10.0/16.0 m, lifting capacity 8.0/25.2 t.

WINDLASSES Two combined windlass and automatic mooring winches 10 t, made by HATLAPA, cable lifter for 84 mm K3 stud link chain cable mooring section for 60 mm dia rope nominal pull 100 kN, speed 32/16 - 4/2 - 18/9 m/min. Two automatic mooring winches with winding head for 60 mm dia rope, made by HATLAPA, speed 32/16 - 4/2 m/min, nominal pull 100 kN. Two automatic mooring winches for 60 mm dia rope, made by HATLAPA, speed 32/16 - 4/2 m/min, nominal pull 100 kN.

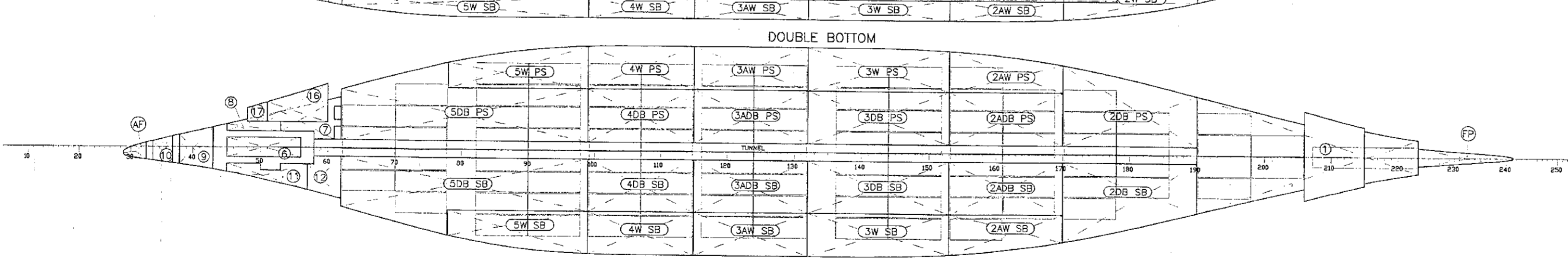
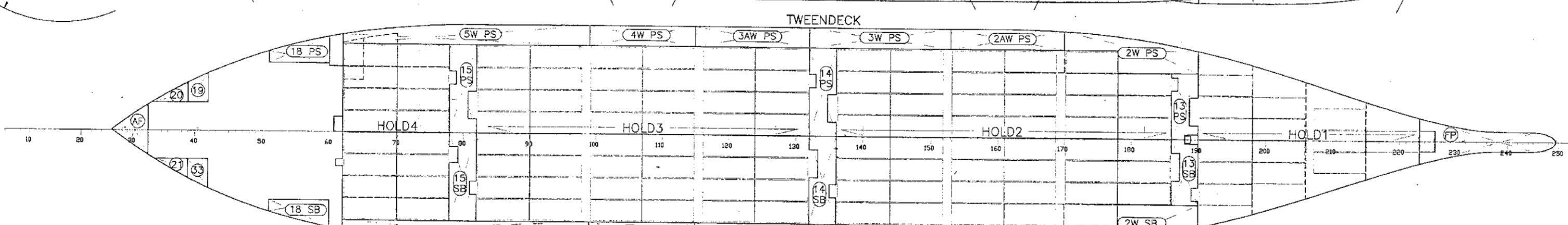
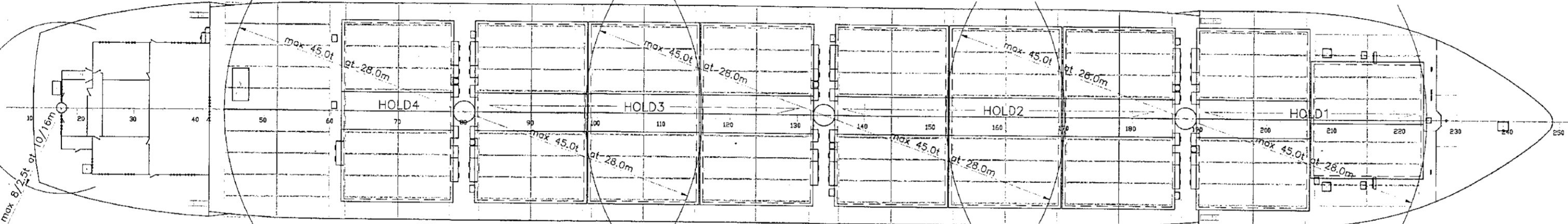
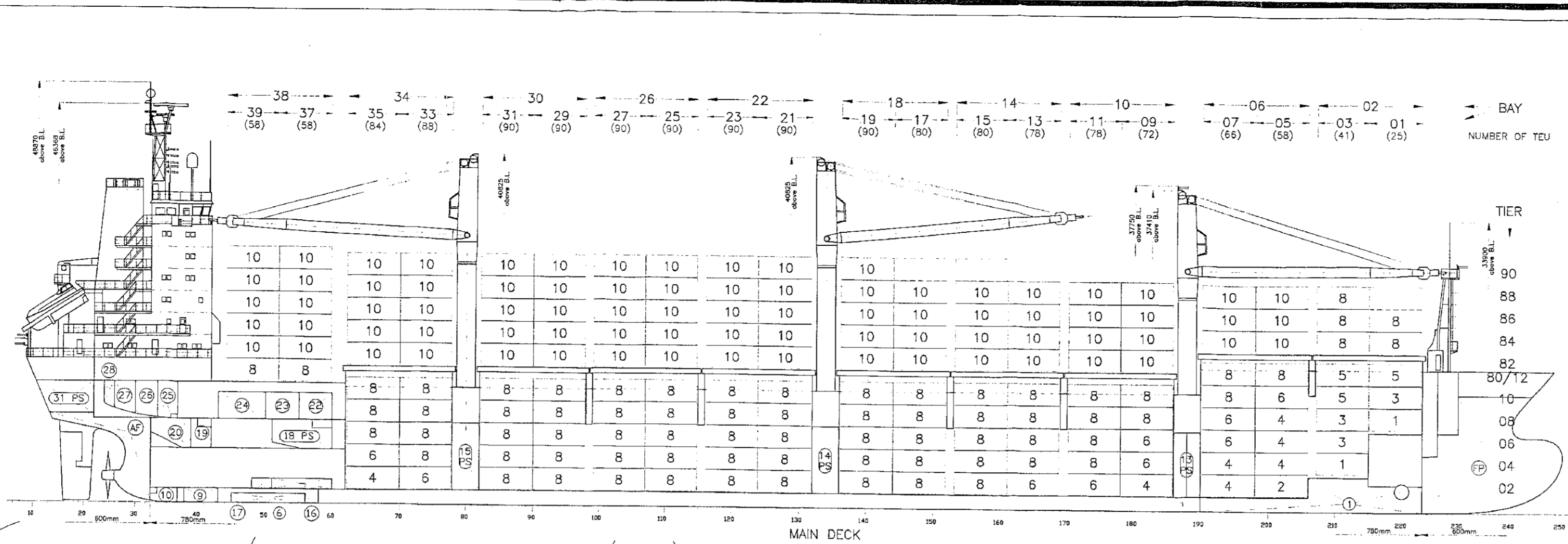
SAFETY EQUIPMENT One free fall life boat type FF740 for 32 persons. Four automatically inflatable life raft for 16 persons with water pressure release and launching arrangement made by DSB. One inflatable life raft for 6 persons made by DSB. One pneumatic rescue boat DSB, type 420 RB, for 6 persons.

FIRE FIGHTING SYSTEM Engine room, cargo holds - high pressure CO₂ system, - water fire system, - water fire system, No.1 Hold (additionally) - water spraying system.

HOLD VENTILATION Axial - flow fans made by WITT & SOHN with AEG, three-phase current motor, 2x protected, 1000 W, No. 1, 2, 3, 4 Holds - 8 air changers/h.

AIR CONDITIONING PLANT Twin duct air conditioning system, made by KLIMOR.

EQUIPMENT FOR Suez Canal, Panama Canal.



HATCH No	MAIN DECK	9	8	7	6	5	4	3	2	1	TOTAL	TOTAL	TOTAL ZKG FROM BL
TIER BAY	39	37	35	33	31	29	27	25	23	21	19	17	15
40	10	10	10	10	10	10	10	10	10	10	10	10	10
38	10	10	10	10	10	10	10	10	10	10	10	10	10
36	10	10	10	10	10	10	10	10	10	10	10	10	10
34	10	10	10	10	10	10	10	10	10	10	10	10	10
32	10	10	10	10	10	10	10	10	10	10	10	10	10
30	10	10	10	10	10	10	10	10	10	10	10	10	10
28	10	10	10	10	10	10	10	10	10	10	10	10	10
26	10	10	10	10	10	10	10	10	10	10	10	10	10
24	10	10	10	10	10	10	10	10	10	10	10	10	10
22	10	10	10	10	10	10	10	10	10	10	10	10	10
20	10	10	10	10	10	10	10	10	10	10	10	10	10
18	10	10	10	10	10	10	10	10	10	10	10	10	10
16	10	10	10	10	10	10	10	10	10	10	10	10	10
14	10	10	10	10	10	10	10	10	10	10	10	10	10
12	10	10	10	10	10	10	10	10	10	10	10	10	10
10	10	10	10	10	10	10	10	10	10	10	10	10	10
8	10	10	10	10	10	10	10	10	10	10	10	10	10
6	10	10	10	10	10	10	10	10	10	10	10	10	10
4	10	10	10	10	10	10	10	10	10	10	10	10	10
2	10	10	10	10	10	10	10	10	10	10	10	10	10
TOTAL ON DECK	20	58	58	58	58	58	58	58	58	58	58	58	58
TOTAL	40	58	58	58	58	58	58	58	58	58	58	58	58

CONTAINERS ON DECK		40'/45'		40'/48'	
VARIANT		40'	45'	40'	48'
LENGTH		8'	8'	8'	8'
WIDTH		8'	8'	8'	8'
HEIGHT		8'6"	9'6"	8'6"	9'6"
TIER 90		20	16	30	8
TIER 88		40	32	70	16
TIER 86		48	40	78	16
TIER 84		48	40	78	16
TIER 82		30	40	60	16
TIER 80		8	8	8	8
TOTAL		194	168	324	72

CONTAINER-CAPACITY/MAX HEIGHTS OF CONTAINERS		20'		40'		40'		40'	
LENGTH		20'	20'	40'	20'	40'	20'	40'	20'
HEIGHT		8'6"	9'6"	TOTAL	8'6"	9'6"	8'6"	9'6"	8'6"
TIER 90		110	110	10	50	10	50	10	50
TIER 88		188	188	8	90	8	90	8	90
TIER 86		196	196	98	98	98	98	98	98
TIER 84		196	196	98	98	98	98	98	98
TIER 82		160	160	80	80	80	80	80	80
TIER 80		16	16	8	8	8	8	8	8
TOTAL		866	866	18	424	18	424	18	424

CHANGE OF DRAUGHT IN mm TO ADDING - 100 T		T (m)																						
10.0 AP	128	119	110	102	94	84	76	65	57	48	40	31	23	11	4	-8	-14	-22	-30	-42	-50	-59	-67	-78
9.5 AP	135	127	117	109	100	90	82	69	61	51	43	33	25	12	4	-8	-14	-23	-32	-45	-53	-63	-71	-83
9.0 AP	144	135	125	116	107	95	87	73	64	54	45	35	26	12	3	-7	-16	-26	-39	-49	-61	-71	-83	-95
8.5 AP	153	144	133	123	114	102	92	78	68	57	48	37	27	13	3	-8	-17	-28	-38	-52	-62	-73	-82	-96
8.0 AP	161	151	140	130	120	107	97	82	72	60	51	39	29	14	4	-8	-18	-29	-39	-54	-65	-76	-86	-101
7.5 AP	168	158	146	135	125	112	101	85	75	63	53	41	30	14	4	-8	-19	-30	-41	-57	-67	-79	-90	-105
7.0 AP	174	164	151	140	130	116	105	89	78	65	55	43	31	15	4	-8	-19	-30	-41	-58	-70	-82	-93	-109
6.5 AP	180	169	156	145	134	120	109	91	80	67	56	43	32	15	4	-9	-20	-33	-44	-61	-73	-85	-97	-113
6.0 AP	186	175	161	149	138	123	112	94	83	69	58	45	33	16	4	-9	-21	-34	-45	-63	-75	-88	-100	-117
5.5 AP	191	179	165	153	141	126	115	96	85	71	59	46	34	16	4	-10	-22	-35	-47	-65	-77	-91	-103	-121
5.0 AP	196	184	170	157	145	130	119	99	87	73	60	48	34	16	3	-11	-23	-37	-49	-68	-80	-94	-106	-124
4.5 AP	201	189	174	161	149	133	122	101	89	74	62	47	35	16	3	-11	-24	-38	-51	-70	-82	-96	-108	-126
4.0 AP	206	194	178	165	152	136	124	103	91	76	63	48	35	15	2	-12	-25	-40	-53	-72	-84	-98	-110	-128

WATER BALLAST		CAPACITY	
SC=1.025 t/m ³	Frames	[m ³]	[MT] [LT]
Forepeak	223-250	468.4	165.41 480.0 472.5
No 1 DB Tank PS	180-223	627.0	221.53 643.0 632.9
No 2 DB Tank PS	170-190	161.0	56.66 165.0 162.4
No 3 DB Tank PS	170-190	325.6	114.99 333.7 328.4
No 4 DB Tank PS	153-170	136.7	48.27 140.0 137.9
No 5 DB Tank PS	153-170	136.7	48.27 140.0 137.9
No 6 DB Tank PS	132-153	169.2	59.75 173.4 170.7
No 7 DB Tank PS	132-153	397.4	140.34 407.3 400.9
No 8 DB Tank PS	115-132	137.0	48.38 140.5 138.3
No 9 DB Tank PS	115-132	137.0	48.38 140.5 138.3
No 10 DB Tank PS	115-132	137.0	48.38 140.5 138.3
No 11 DB Tank PS	115-132	137.0	48.38 140.5