

EQUIPMENT	TYPES	MANUFACTURE	SUPPLIER
Radar (2 off)	5030 CK 343 5030 CAO 342	RACAL DECCA	STN ATLAS ELEKTRONIK
Radar transponder	DEBEG 5900	STN ATLAS ELEKTRONIK	STN ATLAS ELEKTRONIK
Bottom log	DEBEG 4675	C. PLATH	STN ATLAS ELEKTRONIK
DGPS receiver	NT 2000	STN ATLAS ELEKTRONIK	STN ATLAS ELEKTRONIK
GPS receiver	NT 200	STN ATLAS ELEKTRONIK	STN ATLAS ELEKTRONIK
Navigation echo sounder	ATLAS 9205	STN ATLAS ELEKTRONIK	STN ATLAS ELEKTRONIK
Naxos receiver	DEBEG 2900	STN ATLAS ELEKTRONIK	STN ATLAS ELEKTRONIK
Weather facsimile receiver	DEBEG 2952	STN ATLAS ELEKTRONIK	STN ATLAS ELEKTRONIK
Gyro compass system	Std 20	RAYTHEON ANSCHÜTZ	RAYTHEON ANSCHÜTZ
Adaptive auto pilot for rudder steering	NAUTOPLOT A	RAYTHEON ANSCHÜTZ	RAYTHEON ANSCHÜTZ
Magnetic compass system	REFLECTA 2	RAYTHEON ANSCHÜTZ	RAYTHEON ANSCHÜTZ
Rudder angle indicator system	Three facetype and repeaters	RAYTHEON ANSCHÜTZ	RAYTHEON ANSCHÜTZ
Sound signaling system	Zet Horn 141Ac Zet Horn 131Ac	ZOLLNER	
Manual signalling searchlight	PL 4146	FAMOR	FAMOR
Window wiper system		W. G. SCHULZ	W. G. SCHULZ

EQUIPMENT	TYPES	MANUFACTURE	SUPPLIER
EPHIB 406 Mhz	DEBEG 3540	STN ATLAS ELEKTRONIK	STN ATLAS ELEKTRONIK
2 VHF radiotelephone with DSC	DEBEG 6347	STN ATLAS ELEKTRONIK	STN ATLAS ELEKTRONIK
SATCOM Std B with phone, FAX	DEBEG 3230	STN ATLAS ELEKTRONIK	STN ATLAS ELEKTRONIK
SATCOM S4C with ECG (2off)	DEBEG 3220	STN ATLAS ELEKTRONIK	STN ATLAS ELEKTRONIK
3 VHF handheld radiotele.	DEBEG 6701	STN ATLAS ELEKTRONIK	STN ATLAS ELEKTRONIK
Radio station AOC G.M.D.S.S.	DEBEG 3100	STN ATLAS ELEKTRONIK	STN ATLAS ELEKTRONIK

**DESTINATION** Carriage of 20' or 40' containers in holds or on deck and 20', 40', 45' or 48' on hatch covers. Height of holds adequate for 4 tiers of 8'6" containers and one tier of 9'5", except hatch No 2 which accepts 5 tiers of 8'6" containers. Hold No 1 is prepared for carriage of dangerous goods of 1/2/3/4/1/4/2/3/5/1/5/2/6/1/6/2/7/8 Classes as per SOLAS, Chapter VII. Holds No 2, 3, 4, 5 are prepared for carriage of dangerous goods of 2/3/4/1/4/2/3/5/1/5/2/6/1/6/2/7/8 Classes as per SOLAS, Chapter VII. 40' containers in holds are cell-stowed. In holds No 2, No 3 and No 4 hinged stoppers are provided for the carriage of 3x40'9'6" containers.

**SPEED & FUEL CONSUMPTION** Service speed (at 9.85 m draught) 19.7 kts. Service speed (at ballast draught) 20.2 kts. Fuel consumption 24.54 m<sup>3</sup>/24 hrs HFO. Cruising range 15000 n.m.

**MAIN PROPULSION** One two-stroke crosshead engine SULZER Licence HCEGELSKI type 6RFA2U, rating 13320 kW at 113 rpm. The engine drives one fixed pitch propeller, diameter 6.18 m, right hand rotation, made by ABB ZAMECH Ltd.

**ELECTRICAL POWER PLANT** Three three-phase alternators, type GDB-14B5, 1540 kVA at 900 rpm, 450 V, 60 Hz, made by DOLMEL. Three four-stroke engines, SULZER Licence HCEGELSKI, type 9S20H, rating 1540 kW at 900 rpm. One emergency four-stroke engine, LINDBERG/MAN, type 62466 E/AVK 43M1-6, 140 kVA at 1800 rpm, 440 V, 60 Hz.

**STEERING GEAR** One electrohydraulic steering gear, HYDROSTER, type MS 500, rating 500 kNm.

**BOW THRUSTER** Manufactured by ABB ZAMECH Ltd, Loosen licence type TFE0, rating 758 kW at 337 rpm, thrust 110 t.

**BOILERS** Manufactured by AALBORG DANIA, for HFO tank heating preheaters and oil heat consumers required. One auxiliary smoke tube boiler, vertical, 2.5 t/h, 0.7 MPa. One waste heat smoke tube boiler, 2.0 t/h, 0.7 MPa.

**EVAPORATOR** Manufactured by ALFA-LAVAL, capacity 20 t/24h.

**BALLAST SYSTEM** One centrifugal, self priming type pump of 350 m<sup>3</sup>/h capacity, 0.2 MPa. Additionally one spare SW cooling pump of 440 m<sup>3</sup>/h capacity can be connected to the ballast system.

**ANTI-HEELING SYSTEM** One reversible pump of 450 m<sup>3</sup>/h, 0.15 MPa.

**HATCH COVERS** Nine hatches fixed on the main deck, opening size: No. 1 Hatch - 12.48 x 13.00 m, No. 2-9 Hatch - 12.48 x 20.00 m.

**HATCH COVERS No. 1** Hatch - 28.0 t, No. 2-9 Hatch - 15 t or 15.5 t.

**CONTAINERS STACK LOADS** Hatch covers - on No. 1-2 Hatch = 40 t/VEU, 60 t/VEU, on No. 3 Hatch = 50 t/VEU, 90 t/VEU, 120 t/VEU, Main deck (frame 42+62) = 75 t/VEU, 120 t/VEU, Holds = 140 t/VEU, 175 t/VEU.

**UNIFORM LOAD** Hatch covers = 1.75 t/m<sup>2</sup>, Main deck (frame 42+62) = 1.55 t/m<sup>2</sup>, Holds = 1.4 t/m<sup>2</sup>.

**REEFER PLUGS** 300 sockets for reefer containers 344/40, 60Hz, 11.0kW on hatch coverings, made by WISKA, type 32/45/Mon = 150 PCS, 32/45/Mon = 150 PCS.

**CRANES** Three deck cranes NMF of DKH4002B 2PCS & DKH4002B5 1 PCS, rated from 3.0 t to 16.0 t, 180°/360° rotation. One life boat cranes and storing crane TOWMOR type P7010/2116A, radius from 18.2/2 to 10.0/16.0 m, lifting capacity 20/21 tN.

**WINDLASSES** Two combined windlass and automatic mooring winches 120 kN, made by TOWMOR, cable lifter for 55 mm K3 stud link chain cable mooring gear for 65 mm dia rope nominal pull 120 kN, speed 36/18 m/min. Two automatic mooring winches with heaving gear for 60 mm dia rope, made by TOWMOR, speed 36/18 m/min, nominal pull 120 kN. Two automatic mooring winches for 56 mm dia rope, made by TOWMOR, speed 35/18 m/min, nominal pull 120 kN.

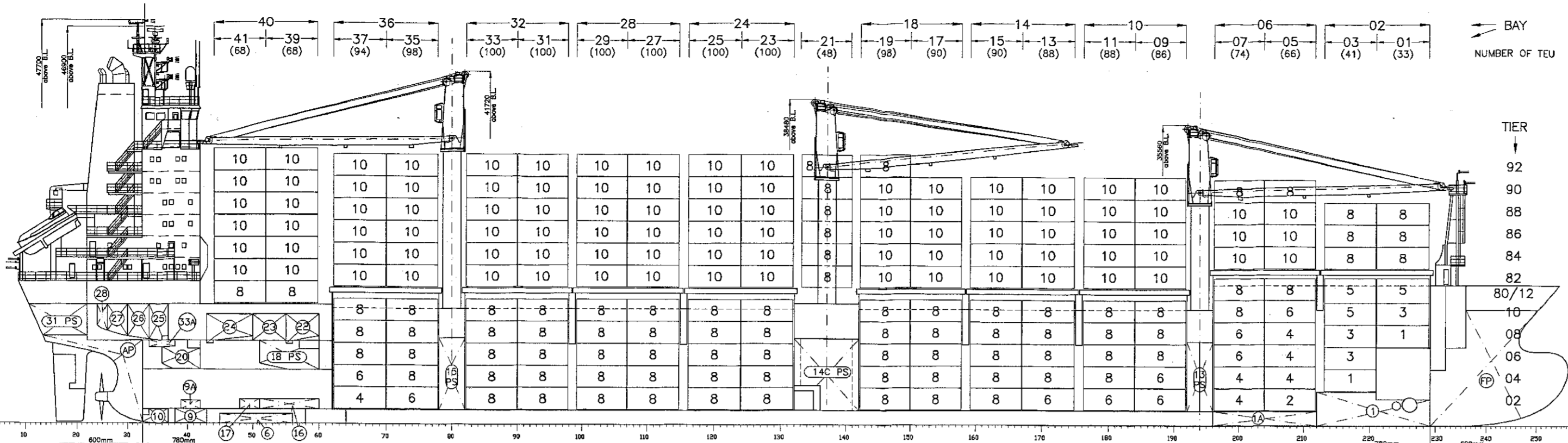
**SAFETY EQUIPMENT** One Free-fall life boat type FB740 for 78 persons. Four automatically inflatable life raft with water pressure release and launching arrangement made by DSB, for 16 pers. One inflatable life raft for 6 persons made by DSB. One pneumatic rescue boat DSB, type 420 IBR, for 8 persons.

**FIRE FIGHTING SYSTEM** Engine room, cargo holds - high pressure CO<sub>2</sub> systems, - water fire system, Weather decks - water fire system, No. 1 Hold (additionally) - water fire system.

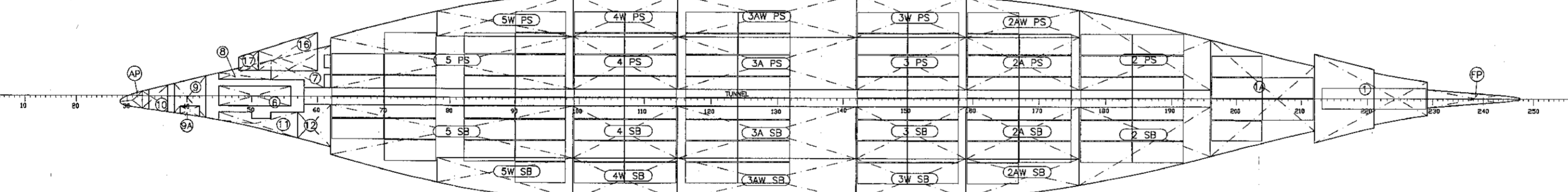
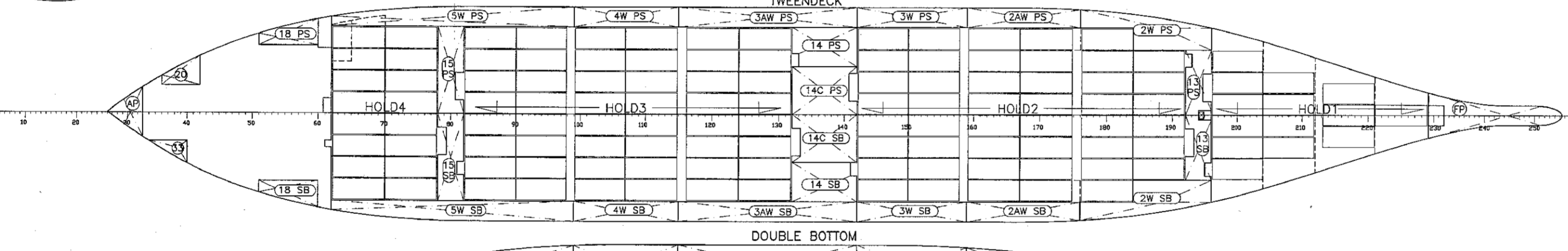
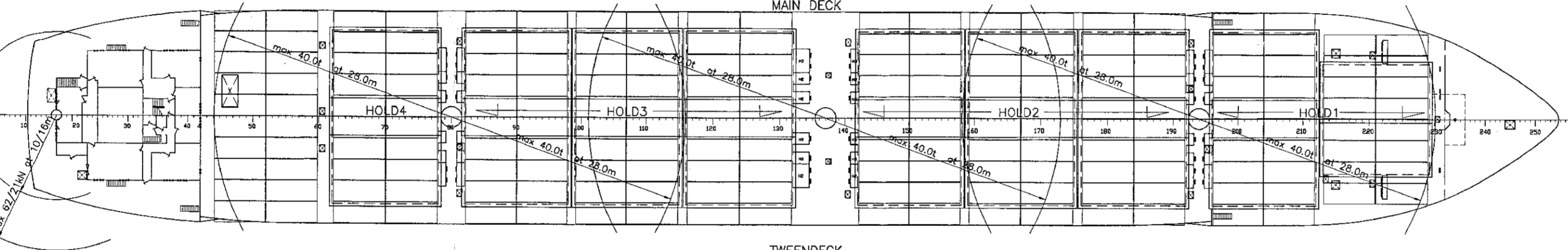
**HOLD VENTILATION** Axial - flow fans made by WITT & SOHN, three phase current motors, No. 1, 2, 3, 4 Holds - 6 air changes/h.

**AIR CONDITIONING PLANT** Twin duct air conditioning system, made by KLUMOR.

**EQUIPMENT FOR** Suez Canal, Panama Canal, Kiel Canal.



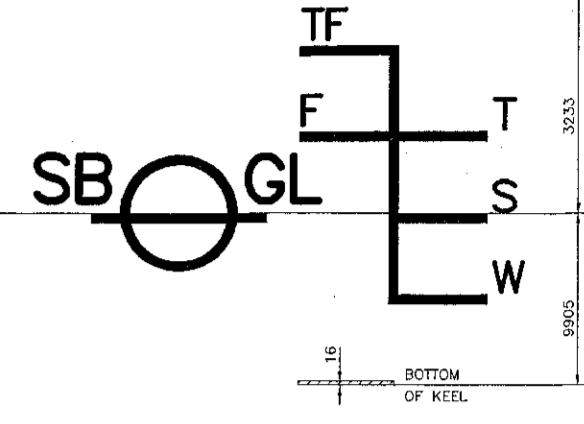
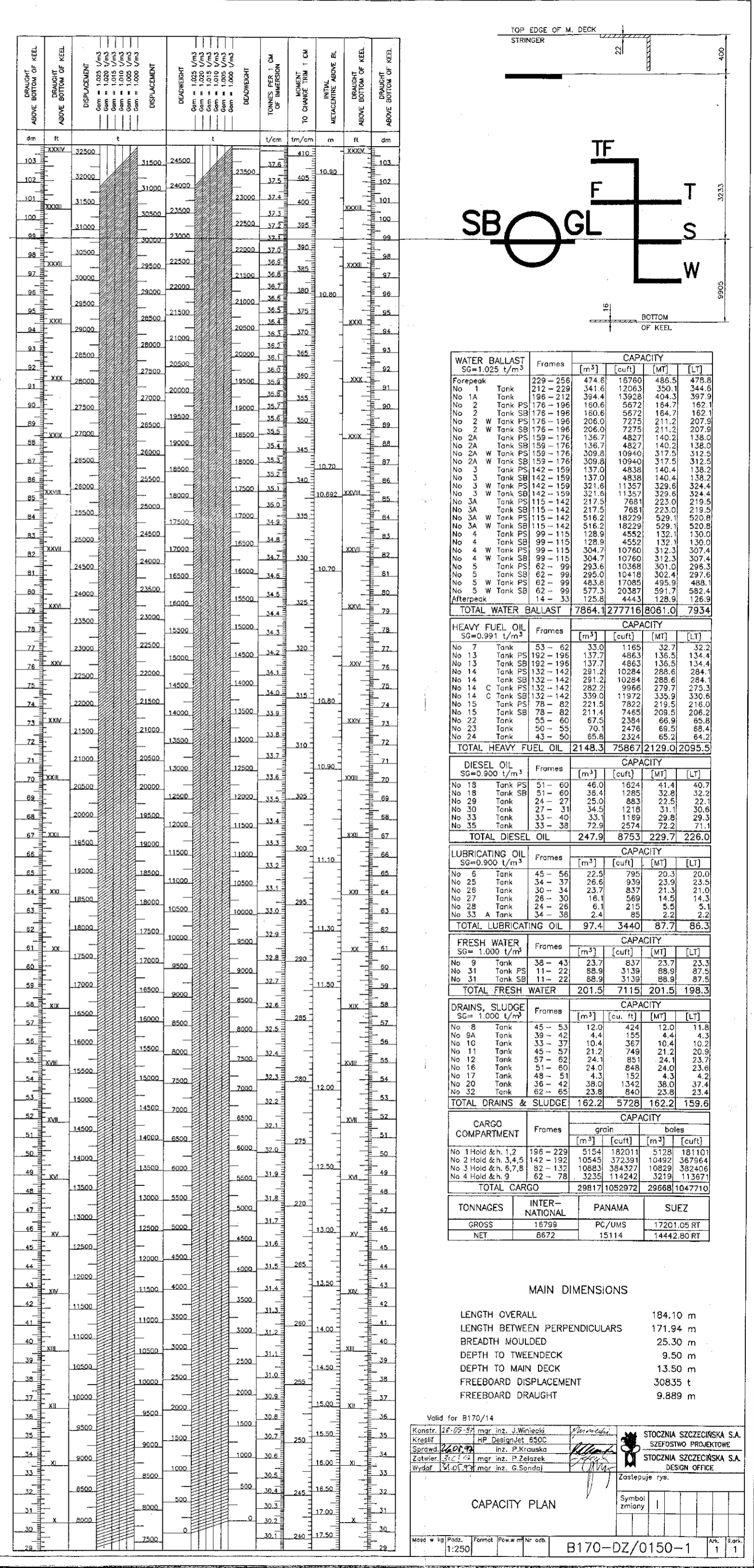
OWNER: MS "ADRIAN" Schiffahrtsgesellschaft mbH & Co. HAMBURG, GERMANY  
 CALL SIGN: D N F R (Delta, November, Foxtrot, Romeo)  
 GL CLASS: 100 A5 Container ship, SOLAS II-2, Reg.54, IW, NAV-0, MC AUT  
 BUILDER: STOCZNIA SZCZECIŃSKA S.A. ul. Hutnicza 1, SZCZECIN Yard No B170/14



HATCH NO	CONTAINERS CAPACITY											TOTAL	TOTAL ZIG	TOTAL ZAG			
	BAY	4	3	2	1	6	5	4	3	2	1						
92	10	10	10	10	10	8	8	8	8	8	8	50	116	57.27	30.44	30.57	30.70
90	10	10	10	10	10	8	8	8	8	8	8	88	184	80.98	27.76	27.89	28.02
88	10	10	10	10	10	10	10	10	10	10	8	98	204	87.96	11.25	25.24	25.37
86	10	10	10	10	10	10	10	10	10	10	8	98	204	87.96	22.38	22.63	22.75
84	10	10	10	10	10	10	10	10	10	10	8	98	204	87.96	19.88	20.01	20.14
82	10	10	10	10	10	10	10	10	10	10	8	98	168	75.21	17.33	17.46	17.59
80	10	10	10	10	10	10	10	10	10	10	8	98	168	75.21	15.27	15.39	15.52
TOTAL	40	60	60	60	60	60	60	60	60	60	60	520	1096	80.64	23.32	23.45	23.58

VARIANT	40'/45'				40'/48'			
	LENGTH	WIDTH	HEIGHT	TIER	LENGTH	WIDTH	HEIGHT	TIER
92	40'	8'	8'	8	40'	8'	8'	8
90	40'	8'	9'6"	8	40'	8'	9'6"	8
88	40'	8'	8'	8	40'	8'	8'	8
86	40'	8'	8'	8	40'	8'	8'	8
84	40'	8'	8'	8	40'	8'	8'	8
82	40'	8'	8'	8	40'	8'	8'	8
80	40'	8'	8'	8	40'	8'	8'	8
TOTAL	240	220	400	80	240	220	400	80

T[m]	CHANGE OF DRAUGHT IN mm TO ADDING - 100 T																								
	FR	20	30	40	48	56	66	74	86	94	103	111	120	128	137	146	154	163							
10.0	AP	-122	115	106	99	92	82	75	64	57	48	41	33	25	17	9	-7	-14	-23	-30	-41	-49	-57	-64	-75
9.5	AP	-129	122	113	105	97	87	80	68	60	51	43	35	27	18	9	-8	-15	-24	-32	-44	-52	-61	-69	-80
9.0	AP	-136	130	120	112	104	93	85	72	64	54	46	37	28	19	9	-9	-17	-27	-35	-48	-56	-66	-74	-86
8.5	AP	-146	138	127	118	110	98	90	76	67	57	49	39	30	20	9	-9	-18	-28	-37	-51	-60	-70	-79	-92
8.0	AP	-153	144	134	124	115	103	94	81	71	61	51	41	32	23	13	-1	-10	-20	-29	-44	-52	-62	-72	-85
7.5	AP	-165	155	144	134	124	111	101	86	75	65	55	44	34	24	14	-10	-19	-30	-40	-56	-64	-75	-85	-99
7.0	AP	-179	169	158	148	138	125	115	100	89	79	67	57	46	35	25	15	-11	-22	-33	-49	-58	-70	-80	-95
6.5	AP	-191	181	170	160	150	136	126	111	100	89	77	66	55	44	34	24	-12	-23	-35	-52	-61	-74	-84	-100
6.0	AP	-212	202	191	181	171	156	146	130	119	108	96	84	73	62	51	41	-14	-26	-38	-56	-65	-79	-89	-106
5.5	AP	-241	231	220	210	200	184	174	158	147	136	124	112	101	90	79	68	-16	-29	-42	-60	-69	-84	-94	-112
5.0	AP	-279	269	258	248	238	222	212	196	185	174	162	150	139	128	117	106	-18	-32	-46	-65	-75	-90	-100	-118
4.5	AP	-336	326	315	305	295	279	269	253	242	231	220	208	197	186	175	164	-21	-36	-51	-70	-80	-96	-106	-126
4.0	AP	-414	404	393	383	373	357	347	331	320	309	298	287	276	265	254	243	-24	-40	-55	-75	-85	-102	-112	-132



WATER BALLAST	Frames	CAPACITY				
		m <sup>3</sup>	[cuft]	[MT]	[LT]	
Forepeak	No 1 Tank	229-256	474.6	1676.0	486.5	478.8
No 1A Tank	No 2 Tank	212-229	341.6	1209.3	350.1	344.4
No 2 Tank	No 3 Tank	176-196	160.6	567.2	184.7	182.1
No 3 Tank	No 4 Tank	178-196	160.6	567.2	184.7	182.1
No 4 Tank	No 5 Tank	175-196	206.0	727.5	211.2	207.9
No 5 Tank	No 6 Tank	196-196	206.0	727.5	211.2	207.9
No 6 Tank	No 7 Tank	196-196	136.7	482.7	140.2	138.0
No 7 Tank	No 8 Tank	159-176	136.7	482.7	140.2	138.0
No 8 Tank	No 9 Tank	159-176	309.8	1094.0	317.5	312.5
No 9 Tank	No 10 Tank	159-176	309.8	1094.0	317.5	312.5
No 10 Tank	No 11 Tank	142-159	137.0	483.8	140.4	138.2
No 11 Tank	No 12 Tank	142-159	137.0	483.8	140.4	138.2
No 12 Tank	No 13 Tank	142-159	321.8	1135.7	329.8	324.4
No 13 Tank	No 14 Tank	142-159	321.8	1135.7	329.8	324.4
No 14 Tank	No 15 Tank	115-142	217.5	768.1	223.0	219.5
No 15 Tank	No 16 Tank	115-142	217.5	768.1	223.0	219.5
No 16 Tank	No 17 Tank	115-142	516.2	1822.9	529.1	520.8
No 17 Tank	No 18 Tank	115-142	516.2	1822.9	529.1	520.8
No 18 Tank	No 19 Tank	99-115	128.8	452.2	132.1	130.0
No 19 Tank	No 20 Tank	99-115	128.8	452.2	132.1	130.0
No 20 Tank	No 21 Tank	99-115	304.7	1076.0	312.3	307.4
No 21 Tank	No 22 Tank	99-115	304.7	1076.0	312.3	307.4
No 22 Tank	No 23 Tank	62-99	293.4	1038.8	301.0	296.3
No 23 Tank	No 24 Tank					